



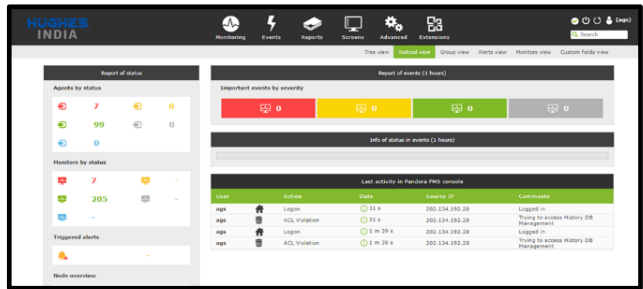
IN 500

High Performance SD-WAN CPE with Dual LTE

IN 500 is a SD-WAN CPE that supports MiMo and diversity, enabling higher throughputs when signal levels are stronger and adds robustness to link with weaker signals. It supports two LTE/3G connections in active/active configuration, active path selection, failover and host of other features. Has configurable Gbps ports for LAN & WAN applications and local breakouts.

The CPE supports industry standard network protocols and advance QoS, Network Security, centralised configuration management and system monitoring features.

IN500 can be paired with Outdoor MiMo antennas, indoor antennas, patch antennas depending on the requirements. The edge device can operate with a 220V/12V adaptor, be powered over ethernet.



Central Management

- Zero Touch Provisioning
- Template based Configuration management

Network and Application Visibility

- Network/Site Overview Site Details- Latency, Drops, Signal levels, Utilization
- DPI enabled Application visibility and Netflow

Security

- User/Password/Radius multi-level access
- DDos, Stateful Firewall, DNS based, IPSec with latest standards

Reporting and Logs

- Customized Reports – top users, latency, uptimes
- Storage of Logs for Analysis

Specifications

SIM Slots	2
4G LTE Modem	2 – Active / Active
LTE Band	FDD- Bands 1/3/8 TDD- Bands 38/39/40/41
GSM/EDGE/WCDMA Band	DC-HSPA+/HSPA+/HSPA/UMTS: Bands 1/5/8/9 TD-SCDMA: Bands 34/39 GSM/GPRS/EDGE: 1800 MHz/900 MHz
WAN&LAN Interface	3* GE Configurable (WAN+LAN)
POE	1 (11-28V)
RS232/RS485	1
USB interface	1 USB3.0
LED indicator	System, SIM, LAN
External Antenna	≥ 3dBi to 9dBi
MiMo / Diversity	Yes
Dimension(WxDxH)	112*146*35mm
Input voltage (DC)	12V DC
Max. power	≤24W
Throughput	Up-to 200Mbps
Operating Temperature	-15 to +55 degrees Centigrade
Software Features	
Basic functions	DNS/DDNS, DHCP, ICMP, NAT, PPPoE, PAP, CHAP, Loopback interface, Static / Dynamic Routing Support, IPv6, MPLS, QOS, GRE
3G/4G function	3G/4G Band Selection, APN Manual Configuration
Zero Touch Provision	Pre-Configuration
Routing Protocol	Static routing, VRF, Multicast, Policy Based Routing, Interface Routing, ECMP Routing, IPv4 dynamic routing protocols: RIP v1/v2, OSPFv2, BGP v4, IPv6 dynamic routing protocols: RIPng, OSPFv3, BGP, Bidirectional Forwarding Detection (BFD)
Link Failover	IP Reachability, Script Based
Security Functions	Stateful filtering, Source and destination NAT, Filtering by IP address and address range, port and port range, IP protocol, DSCP etc, Internal connection, routing and packet marks, Address lists, RAW filtering to bypass connection tracking. MAC Address Filtering, Radius Support
VPN Function	IPSec, IKEv2 support, Tunnelling Protocols (OpenVPN, PPTP, PPPoE, L2TP, SSTP), Advanced PPP features (MLPPP, BCP), Simple tunnels (IPIP, EoIP) IPv4 and IPv6 support. VLAN, MPLS based VPNs
Encryption	DES,3DES, AES, Blowfish, Twofish, Camellia
Bridge mode	In-Path
Diagnosis Tool	Ping, Traceroute, Bandwidth Test, Ping Flood, Packet Sniffer, Traffic Generator, File Fetch, Telnet, SSH Ver 1 and 2
QoS Functions	HTB QoS with CIR, MIR, burst and priority support Basic QoS with simple queues, Dynamic Client Rate Equalisation (PCQ)
System Status Log	Cellular/ Traffic/ VPN/ Accounting
Management	Console, Web, Controller Management